



GINZA ORO 31

GINZA ORO 45

GINZA ORO 21

GINZA ORO 32

GINZA ORO 49

GINZA ORO 27

GINZA ORO 38

GINZA ORO 36

GINZA ORO 11

GINZA ORO 44

GINZA ORO 17

GINZA ORO 01

GINZA ORO 15

GINZA ORO 51

GINZA ORO 28

GINZA ORO 39

GINZA ORO 50

GINZA ORO 25

GINZA ORO 53

GINZA ORO 24

GINZA ORO 07

GINZA ORO 41

GINZA ORO 52

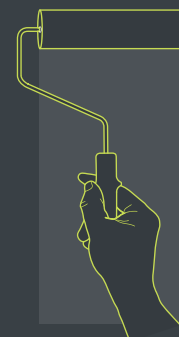
GINZA ORO 06



ISTRUZIONI PER L'APPLICAZIONE DEL PRODOTTO

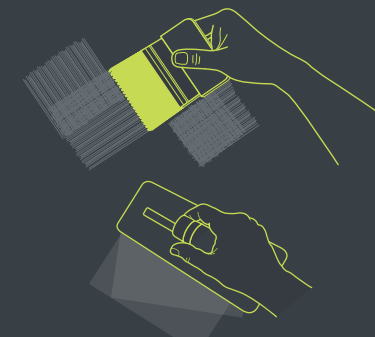
1 PREPARAZIONE DEI SUPPORTI

Per un risultato durevole, pulire la superficie da rivestire, eliminando ogni traccia delle pitture precedenti, soprattutto se non completamente aderenti al muro. Poi, applicare uno strato di Fissamuro Ambientesano. Essiccazione 12/24 ore.



2 APPLICAZIONE DI ABSTRACT FONDO

Applicare uno strato di Abstract Fondo, usando un rullo a pelo corto. Resa di Abstract Fondo: 10 m²/lt. Sovrapplicazione: 4-6 ore a seconda della temperatura ambientale.



3 APPLICAZIONE DI GINZA

Applicare Ginza con il frattone di plastica o di acciaio inox, o con lo spalter a seconda del risultato desiderato. **Effetto spatolato:** applicare Ginza non diluito con una spatola di plastica o un frattone inox per ottenere un effetto vellutato, liscio. **Effetto pennellato:** diluire Ginza con il 20% d'acqua e applicare con uno spalter incrociando le pennellate.

USAGE INSTRUCTIONS

1 SURFACE PREPARATION

In order to get a durable result, clean the surface, removing any previous paints, especially where not completely adherent. Then, apply just one coat of Fissamuro Ambientesano. Drying 12/24 hrs.

2 APPLICATION OF ABSTRACT FONDO

Apply one coat of Abstract Fondo using a short hair roller. Coverage: Abstract Fondo: 10 m²/lt. Recoatings: 4-6 hours depending on the ambient temperature.

3 APPLICATION OF GINZA

Apply Ginza both with a stainless steel or plastic trowel and a paintbrush spalter, in order to get different effects. **Troweled effect:** apply Ginza, as it is, with a stainless steel or plastic trowel to get a velvety smooth effect. **Brush effect:** add 20% of water in Ginza and apply it with a paintbrush spalter by crossing the strokes, in order to get a full-bodied effect.

CONSEIL DE MISE EN ŒUVRE DU PRODUIT

1 PRÉPARATION DES SUPPORTS

Pour obtenir de meilleurs résultats il faut bien nettoyer la surface à traiter, en enlevant les anciennes peintures qui n'adhèrent plus et en appliquant une couche de Fissamuro Ambientesano. Séchage 12/24 heures.

2 APPLICATION DE ABSTRACT FONDO

Appliquer une couche de Abstract Fondo en utilisant un rouleau à poil court. Rendement Abstract Fondo: 10 m²/lt. Recouvrable: 4-6 heures selon la température ambiante.

3 APPLICATION DE GINZA

Appliquer Ginza avec la taloche en plastique ou en acier inox, ou avec le spalter selon le résultat qu'ont veu obtenir. **Effet classique (à la spatule):** appliquer Ginza sans le diluer avec une spatule en plastique ou une taloche en acier inox pour obtenir un effet velouté, lisse. **Aspect coup de pinceau:** diluer Ginza avec 20% d'eau et appliquer avec un spalter en croisant bien les mouvements.

INFORMAZIONI TECNICHE

RESA:
spatola di plastica o frattone inox: circa 12 m²/lt
spalter: circa 10 m²/lt
PULIZIA ATTREZZI: acqua e sapone
TEMPERATURA DI STOCCAGGIO: +5°C/+35°C

TECHNICAL INFORMATION

COVERAGE:
trowel application: about 12 m²/lt
spalter: about 10 m²/lt
TOOLS CLEANING: water and soap
STORAGE TEMPERATURE: +5°C/+35°C

INFORMATION TECHNIQUE

RENDEMENT:
à la spatule ou taloche en inox: environ 12 m²/lt
spalter: environ 10 m²/lt
NETTOYAGE DES OUTILS: eau et savon
TEMPÉRATURE DE STOCKAGE: +5°C/+35°C



Boero Bartolomeo S.p.A

I - 16121 Genova - Via Macaggi, 19 - Tel. +39 010.5500.70 - Fax +39 010.5500.730
www.attivacolori.it - e-mail: sales@attivage.it

MADE IN ITALY



P05280000001000



ginza

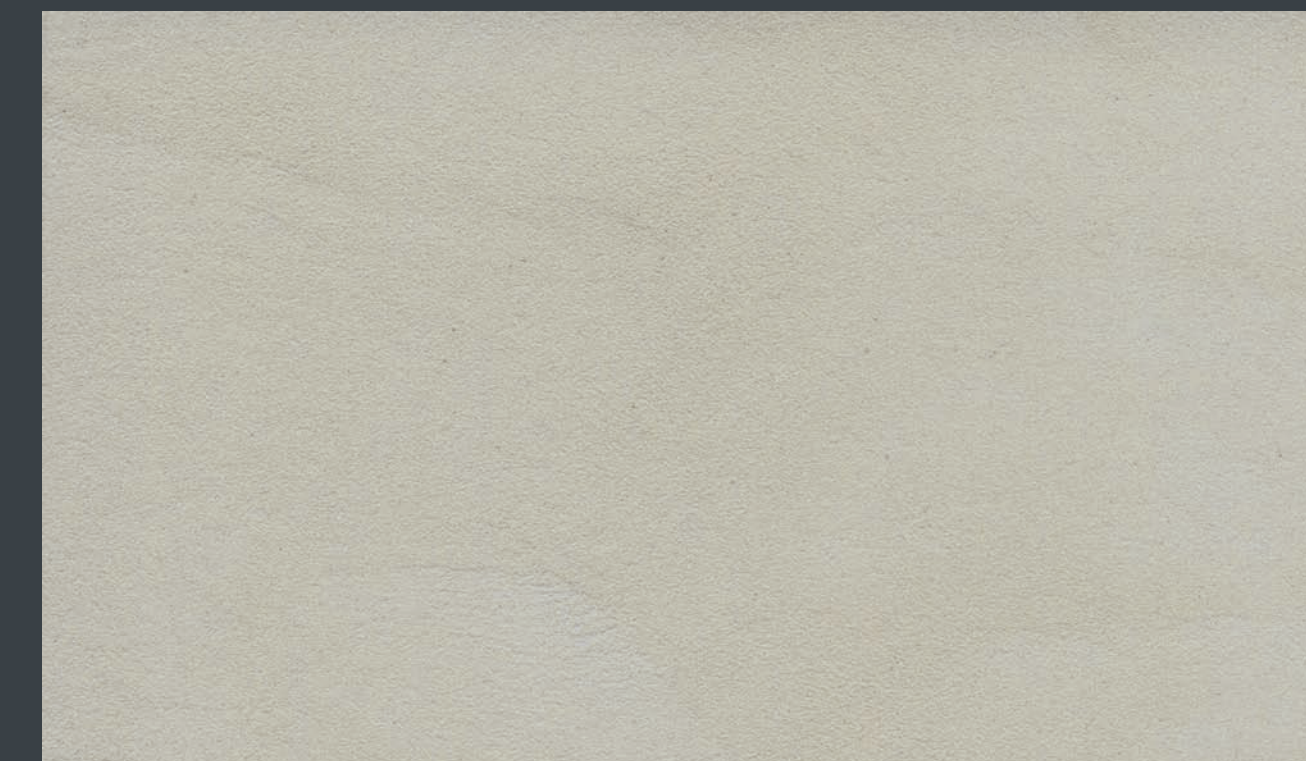
Finitura Decorativa
Decorative Finish
Finition Décorative

Perlescente
Pearlescent effect
Effet perle

abstract
decoration

ginza

Perlescente
Pearlescent effect
Effet perle

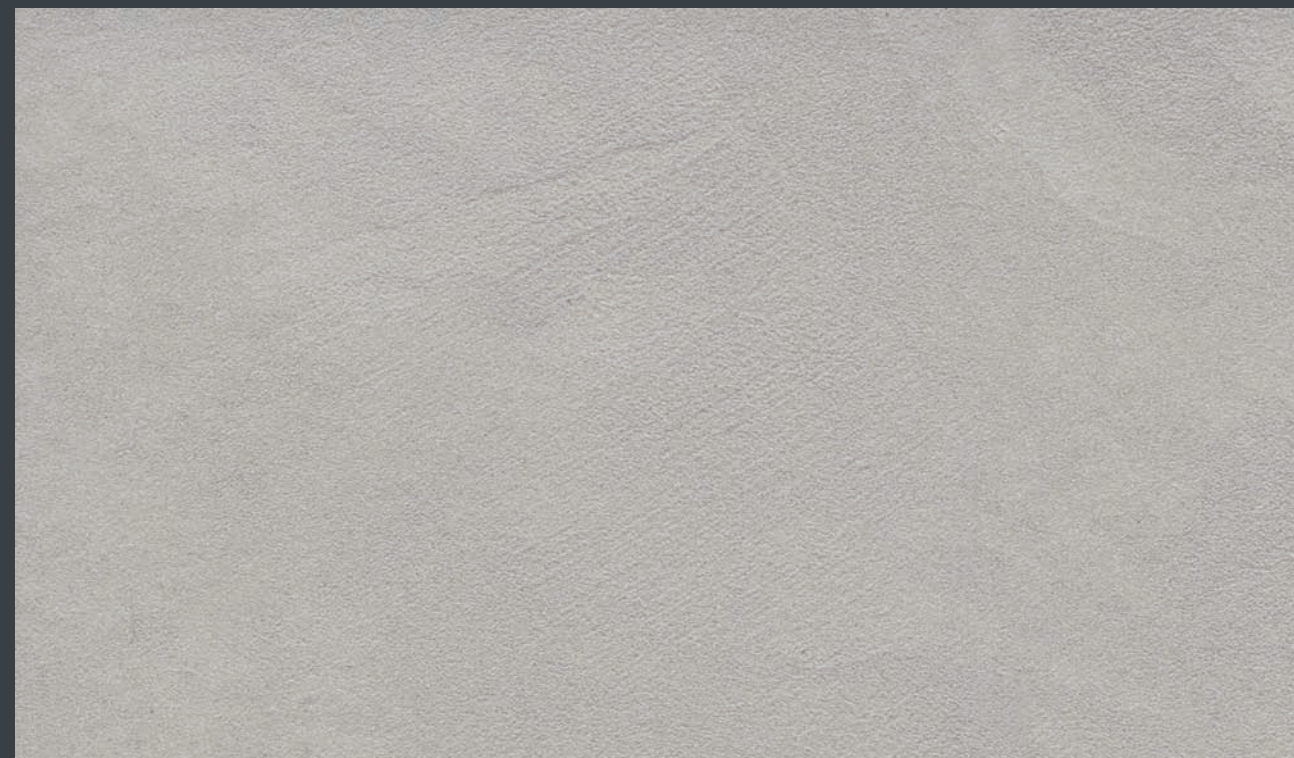


BASE ORO EFFETTO SPATOLATO

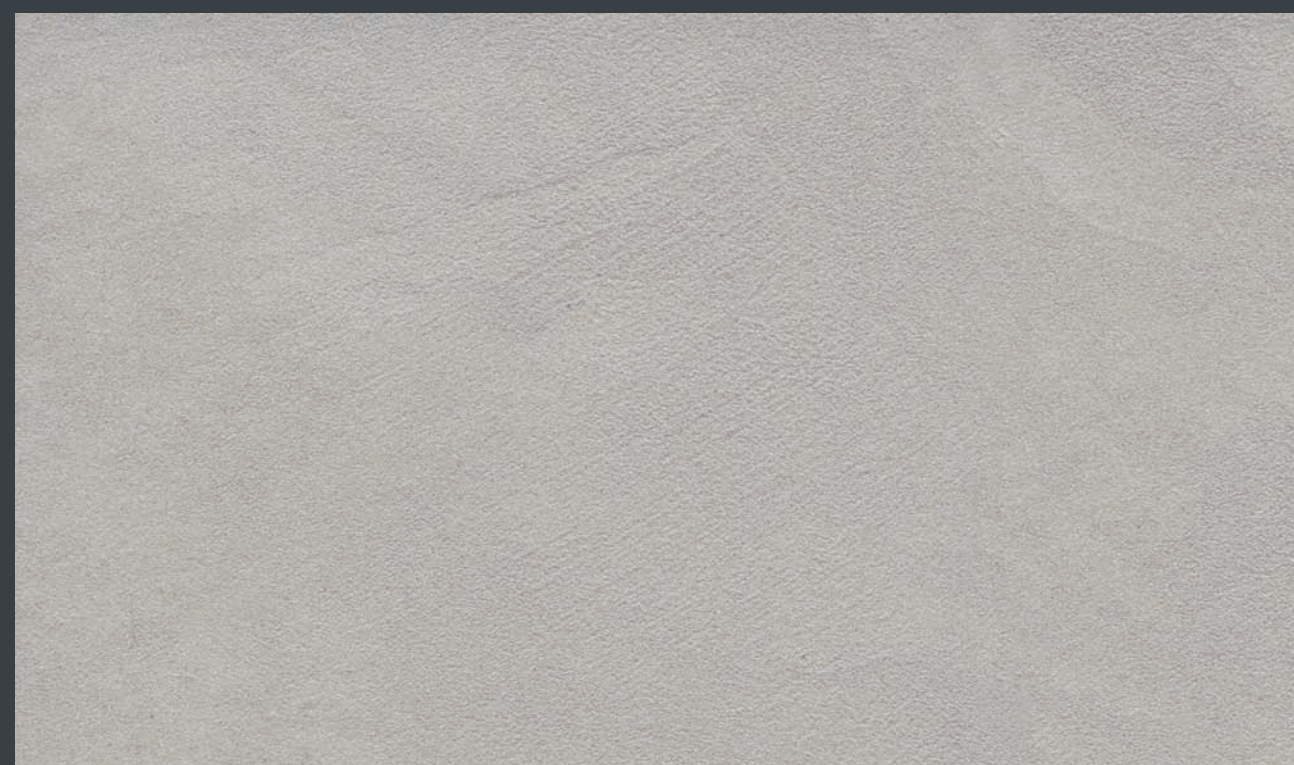


EFFETTO PENNELLATO - GINZA ORO 10

Tutte le tinte riportate sulla presente cartella sono da considerarsi puramente indicative
All colors shown on this colour card are merely indicative
Toutes les couleurs présentées sur ce tableau sont à titre indicatif

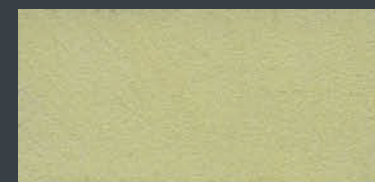


BASE ARGENTO EFFETTO SPATOLATO



BASE ARGENTO EFFETTO PENNELLATO

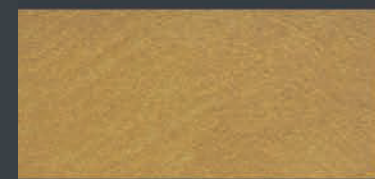
Tutte le tinte riportate sulla presente cartella sono da considerarsi puramente indicative
All colors shown on this colour card are merely indicative
Toutes les couleurs présentées sur ce tableau sont à titre indicatif



GINZA ARGENTO 85



GINZA ARGENTO 86



GINZA ARGENTO 46



GINZA ARGENTO 34



GINZA ARGENTO 40



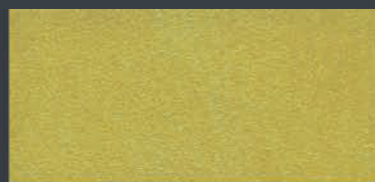
GINZA ARGENTO 38



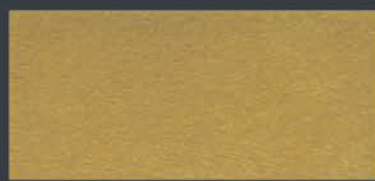
GINZA ARGENTO 58



GINZA ARGENTO 57



GINZA ARGENTO 43



GINZA ARGENTO 03



GINZA ARGENTO 73



GINZA ARGENTO 07



GINZA ARGENTO 36



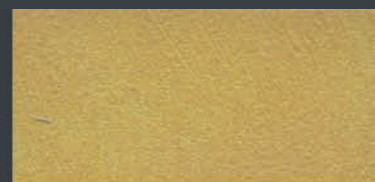
GINZA ARGENTO 32



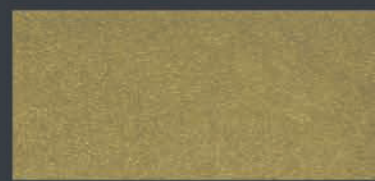
GINZA ARGENTO 59



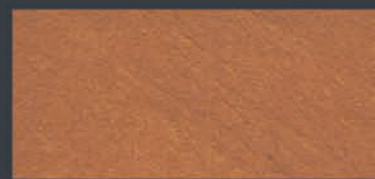
GINZA ARGENTO 92



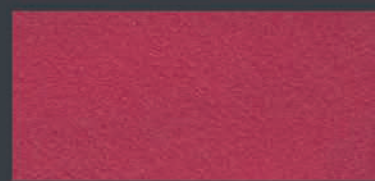
GINZA ARGENTO 47



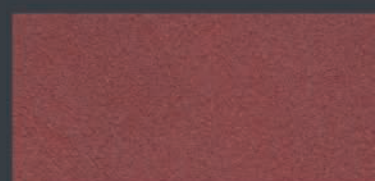
GINZA ARGENTO 44



GINZA ARGENTO 74



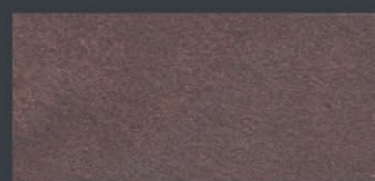
GINZA ARGENTO 75



GINZA ARGENTO 05



GINZA ARGENTO 29



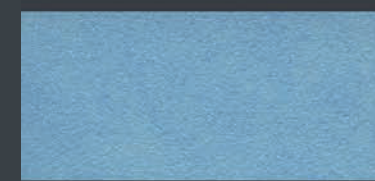
GINZA ARGENTO 56



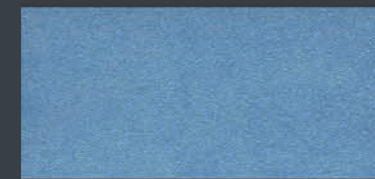
GINZA ARGENTO 91



GINZA ARGENTO 51



GINZA ARGENTO 25



GINZA ARGENTO 12



GINZA ARGENTO 80



GINZA ARGENTO 20



GINZA ARGENTO 16



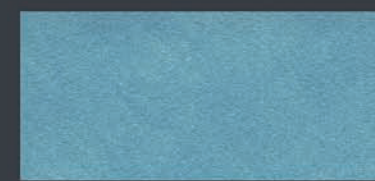
GINZA ARGENTO 18



GINZA ARGENTO 48



GINZA ARGENTO 54



GINZA ARGENTO 63



GINZA ARGENTO 26



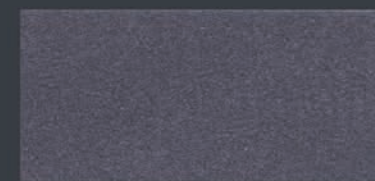
GINZA ARGENTO 19



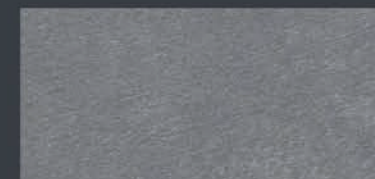
GINZA ARGENTO 27



GINZA ARGENTO 69



GINZA ARGENTO 15



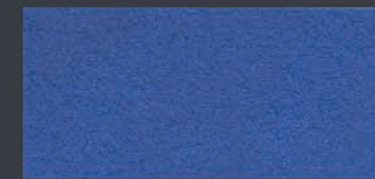
GINZA ARGENTO 02



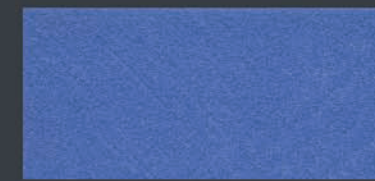
GINZA ARGENTO 66



GINZA ARGENTO 78



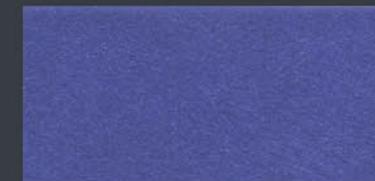
GINZA ARGENTO 77



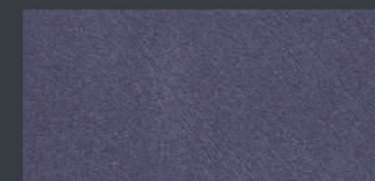
GINZA ARGENTO 79



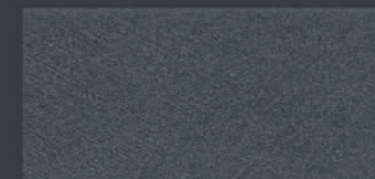
GINZA ARGENTO 24



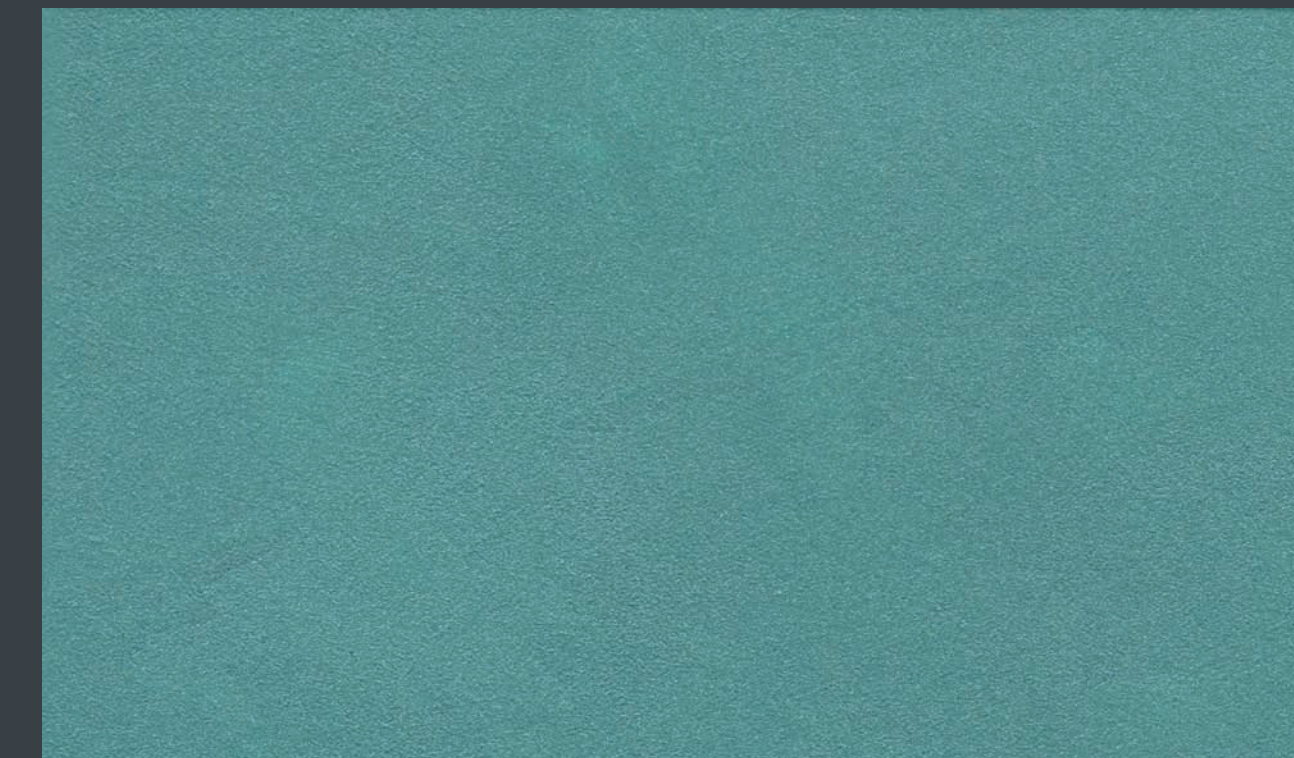
GINZA ARGENTO 70



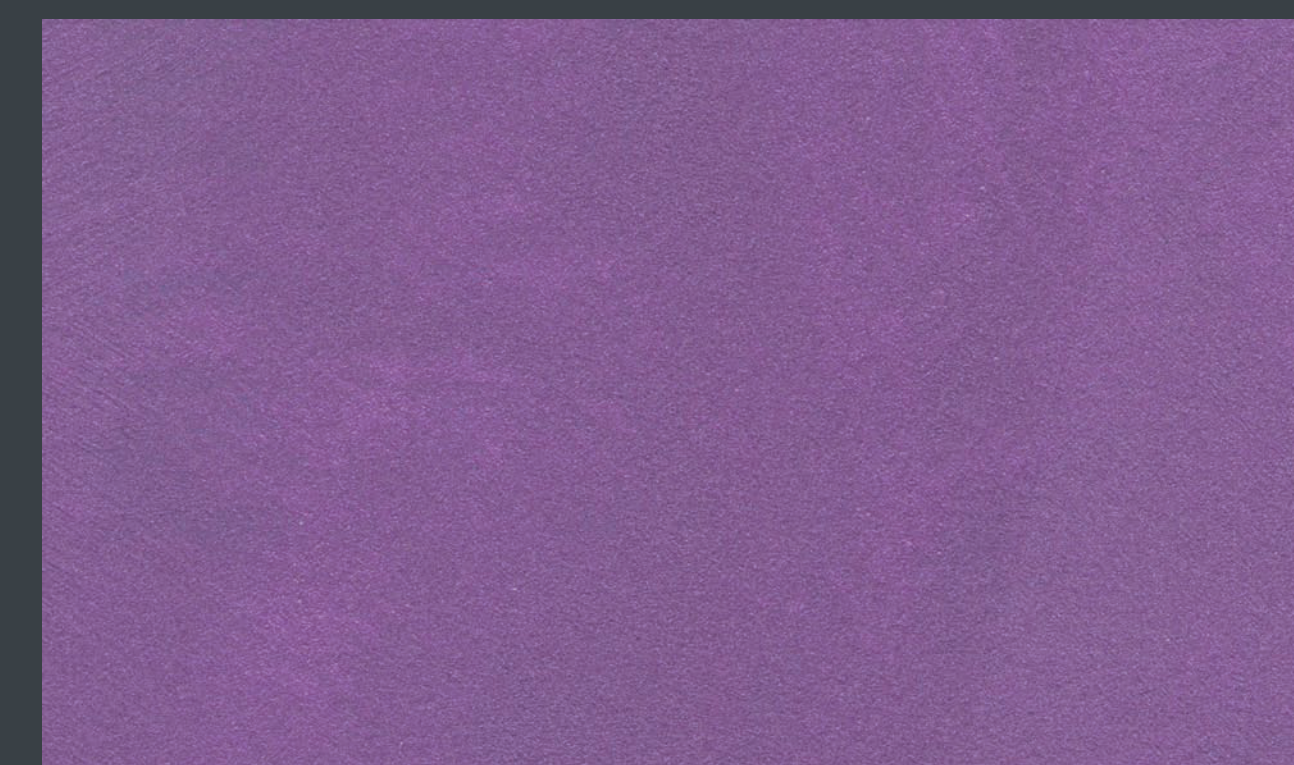
GINZA ARGENTO 94



GINZA ARGENTO 67



EFFETTO SPATOLATO - GINZA ARGENTO 09



EFFETTO PENNELLATO - GINZA ARGENTO 71