

ISTRUZIONI PER L'APPLICAZIONE DEL PRODOTTO

1 PREPARAZIONE DEI SUPPORTI

Nel caso di muri perfettamente lisci: per un risultato durevole, pulire la superficie da rivestire, eliminando ogni traccia delle pitture precedenti, soprattutto se non completamente aderenti al muro.

Poi, eventualmente, applicare uno strato di fissativo Fissamuro Ambientesano.

Essiccazione 12/24 ore.

Nel caso di muri scabri o con evidenti irregolarità: prima di compiere le precedenti operazioni, è consigliabile rasare la superficie da trattare.

2 APPLICAZIONE DI ABSTRACT FONDO

Applicare uno strato di Abstract Fondo, usando un rullo a pelo corto.

Resa di Abstract Fondo: 10 m²/lt

Sovrapplicazione: 4-6 ore a seconda della temperatura ambientale.

3 APPLICAZIONE DI VILLAGE

Applicare Village con il pennello spalter con pennellate incrociate su una superficie di 1-2 m² e ripassando poi con l'attrezzo scarico per ottenere un effetto gofrato, a rilievo.

Se invece si preferisce un effetto liscio, dopo 15-30 minuti (a seconda del grado di assorbimento della parete) ripassare Village con la spatola di plastica.

USAGE INSTRUCTIONS

1 SURFACE PREPARATION

For perfectly smooth walls: in order to get a durable result, clean the surface, removing any previous paints, especially where not completely adherent.

Then, apply just one coat of Fissamuro Ambientesano. Drying 12/24 hrs.

For irregular walls: before the above mentioned operations, smooth, sand and fill carefully the surface to be treated.

2 APPLICATION OF ABSTRACT FONDO

Apply a coat of Abstract Fondo using a short hair roller.

Coverage of Abstract Fondo: 10 m²/lt

Recoatings: 4-6 hours according to the ambient temperature.

3 APPLICATION OF VILLAGE

Apply Village with a spalter brush, giving crossed and irregular strokes on a 1-2 m² surface and tracing over again with the not soaked spalter, in order to get an embossing, "in relief" effect.

When a perfectly smoothed effect is desired, after 15-30 minutes (due to wall absorption) apply again Village with a plastic trowel.

CONSEIL DE MISE EN ŒUVRE DU PRODUIT

1 PRÉPARATION DES SUPPORTS

Dans le cas des murs parfaitement lisses: pour un résultat durable, les supports doivent être propres, nettoyer la surface à revêtir, en supprimant toutes les traces d'anciennes peintures surtout si elles ne sont pas adhérentes.

Ensuite, si nécessaire, appliquer une couche d'impression Fissamuro Ambientesano. Séchage 12/24 heures.

2 APPLICATION DE ABSTRACT FONDO

Appliquer une couche de Abstract Fondo, en utilisant un rouleau à poil court.

Rendement Abstract Fondo: 10 m²/lt

Recouvrable après: 4-6 heures selon la température ambiante.

3 APPLICATION DE VILLAGE

Appliquer Village avec un spalter en le croisant durant l'application sur une surface de 1-2 m² et puis repasser la surface avec l'outil déchargé de produit pour obtenir un effet gaufré en relief si vous préférez un effet lisse, après 15-30 minutes (en fonction du degré d'absorption de la paroi), appliquer de nouveau Village avec une spatule en plastique.

INFORMAZIONI TECNICHE

RESA: circa 8-10 m²/lt

PULIZIA ATTREZZI: acqua e sapone

TEMPERATURA DI STOCCAGGIO: +5°C/+35°C

PRONTO ALL'USO

TECHNICAL INFORMATION

COVERAGE: about 8-10 m²/lt

TOOLS CLEANING: water and soap

STORAGE TEMPERATURE: +5°C/+35°C

READY TO USE

INFORMATION TECHNIQUE

RENDEMENT: environ 8-10 m²/lt

NETTOYAGE DES OUTILS: eau et savon

LA TEMPÉRATURE DE STOCKAGE: +5°C/+35°C

PRÊT À L'EMPLOI



Boero Bartolomeo S.p.A

I - 16121 Genova - Via Macaggi, 19 - Tel. +39 010.5500.70 - Fax +39 010.5500.730
www.attivacolori.it - e-mail: sales@attivage.it

MADE IN ITALY



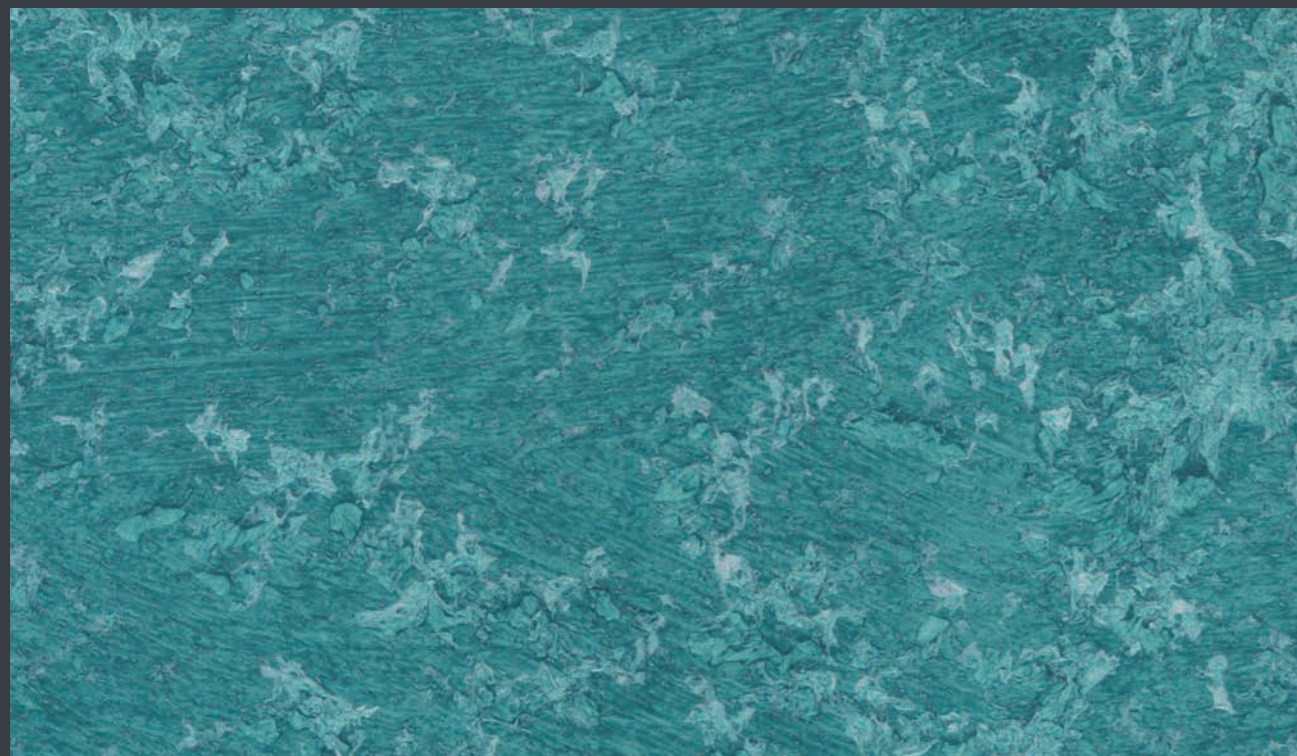
8009064144998

POS310000001000

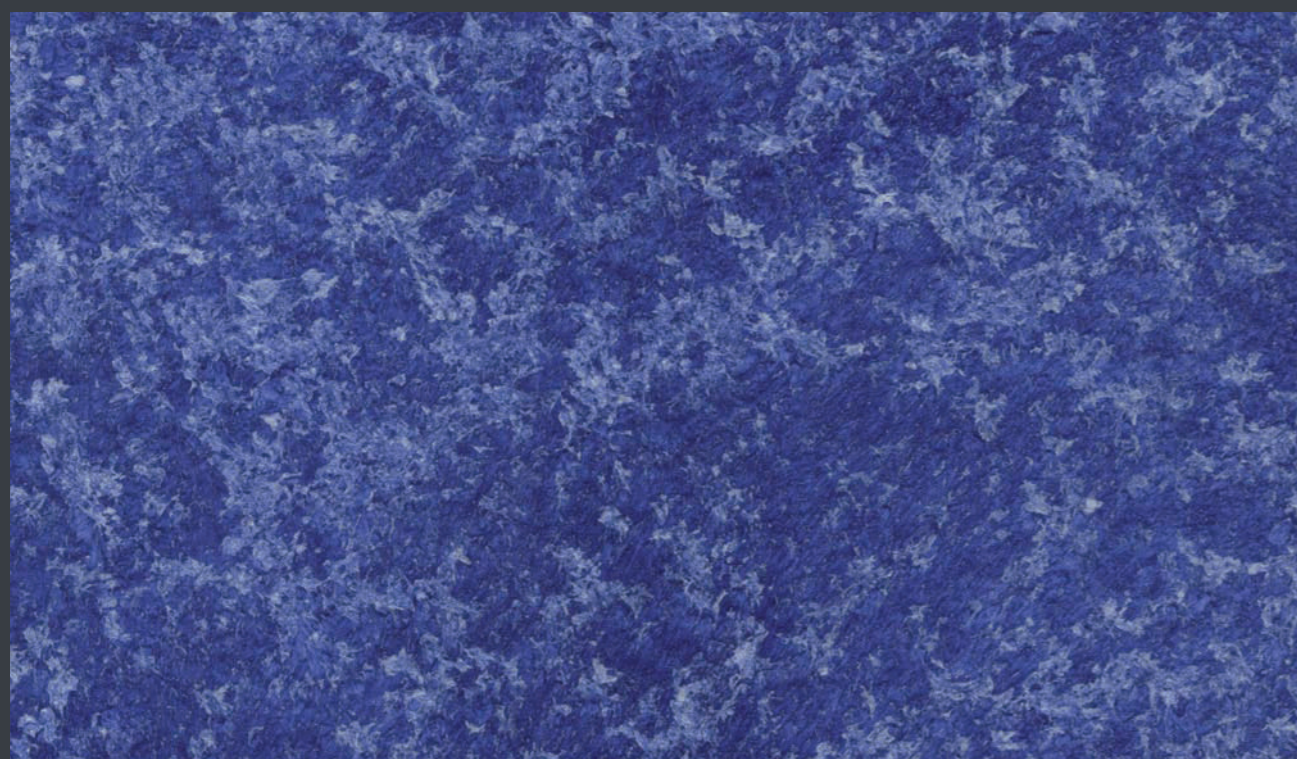
village

Finitura Decorativa
Decorative Finish
Finition Décorative

Effetto multicolorato
Polychromatic effect
Effet polychromatique



VILLAGE 51



VILLAGE 55

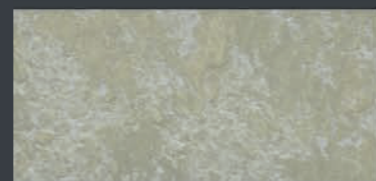
Tutte le tinte riportate sulla presente cartella sono da considerarsi puramente indicative
All colors shown on this colour card are merely indicative
Toutes les couleurs présentées sur ce tableau sont à titre indicatif



VILLAGE 15



VILLAGE 57



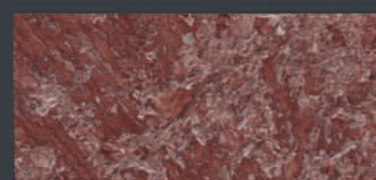
VILLAGE 64



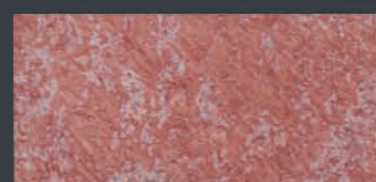
VILLAGE 36



VILLAGE 99



VILLAGE 30



VILLAGE 16



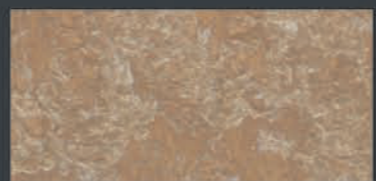
VILLAGE 58



VILLAGE 48



VILLAGE 14



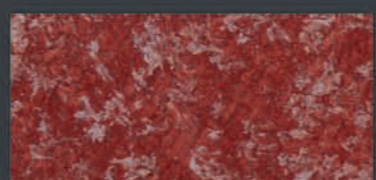
VILLAGE 46



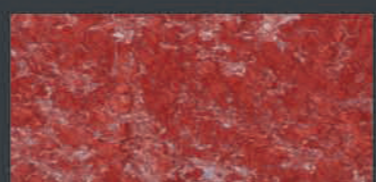
VILLAGE 38



VILLAGE 97



VILLAGE 05



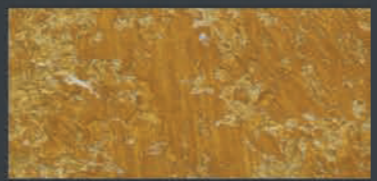
VILLAGE 109



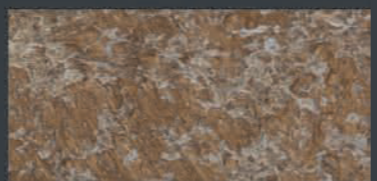
VILLAGE 80



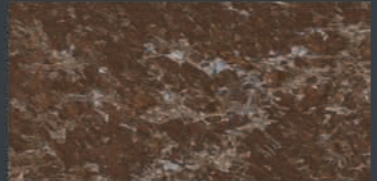
VILLAGE 67



VILLAGE 108



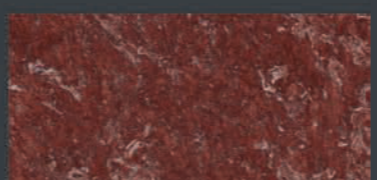
VILLAGE 39



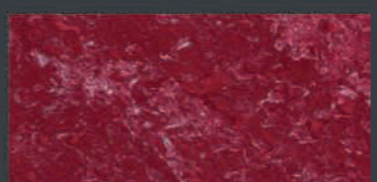
VILLAGE 92



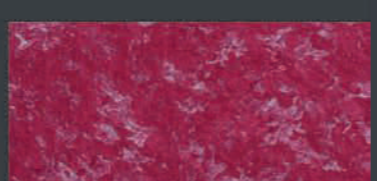
VILLAGE 95



VILLAGE 54



VILLAGE 106



VILLAGE 105



VILLAGE 63



VILLAGE 22



VILLAGE 61



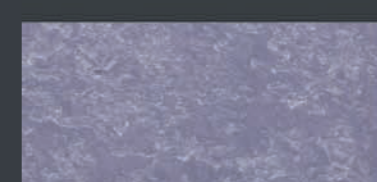
VILLAGE 33



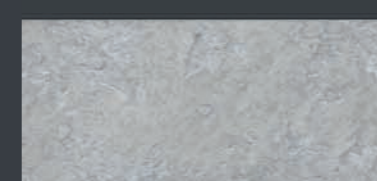
VILLAGE 88



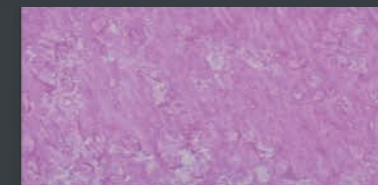
VILLAGE 78



VILLAGE 50



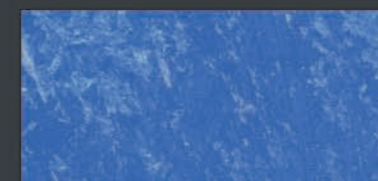
VILLAGE 13



VILLAGE 21



VILLAGE 25



VILLAGE 101



VILLAGE 23



VILLAGE 87



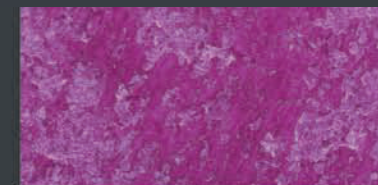
VILLAGE 28



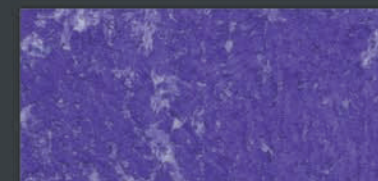
VILLAGE 26



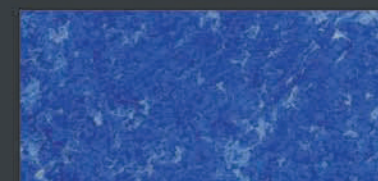
VILLAGE 02



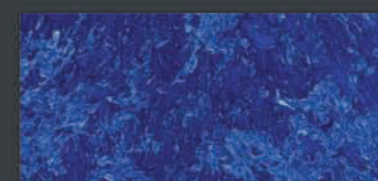
VILLAGE 10



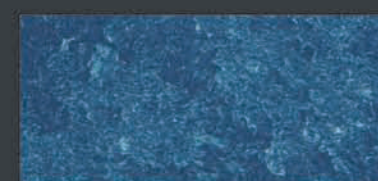
VILLAGE 11



VILLAGE 08



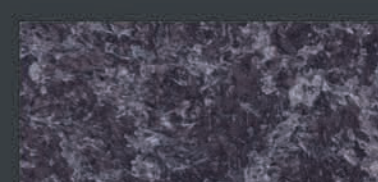
VILLAGE 100



VILLAGE 86



VILLAGE 69



VILLAGE 53



VILLAGE 01